



**NOTICE OF A SPECIAL MEETING OF THE PARKS AND RECREATION COMMISSION
OF THE TOWN OF CLARKDALE
WEDNESDAY, JULY 23, 2025 AT 5:00 PM**

In Person: Clark Memorial Clubhouse, 19 N. Ninth St., Clarkdale AZ

OR

Join Zoom Meeting

<https://us02web.zoom.us/j/85998911182>

Meeting ID: 859 9891 1182

Unless otherwise stated, the public will have physical access to the meeting place 15 minutes prior to the start of the meeting.

Town of Clarkdale Vision

The Town of Clarkdale connects our unique history, proximity to the Verde River, and small-town charm to a future with a vibrant economy.

We cultivate an environment where residents and businesses can thrive; providing services and jobs for our residents and capitalizing upon tourism.

We sustainably enhance our infrastructure, support the arts and education, and develop recreational opportunities to create a bright future for our entire community.

PURSUANT TO A.R.S. §38-431.02, NOTICE IS HEREBY GIVEN that the Parks and Recreation Commission of the Town of Clarkdale will hold a Regular Meeting on Wednesday, July 23, 2025, at 5:00 PM. Members of the Parks and Recreation Commission will attend either in person, by telephone or via Zoom. A quorum of Town Council members may be present at this meeting; however, they will not deliberate or take any action on items. All members of the public are welcome to attend.

ALL ITEMS ON THIS AGENDA ARE SCHEDULED FOR DISCUSSION AND POSSIBLE ACTION, UNLESS OTHERWISE NOTED.

1. CALL TO ORDER

2. ROLL CALL

3. PUBLIC COMMENT

The Parks and Recreation Commission invites the public to provide comments at this time. Members of the Parks and Recreation Commission may not discuss items that are not specifically identified on the agenda. Therefore, pursuant to A.R.S. §38-431.01, action taken as a result of public comment will be limited to directing staff to study the matter, responding to any criticism, or scheduling the matter for further consideration and decision at a later date. Persons interested in making comments on a specific agenda item are asked to complete a brief form and submit it to the Clerk or liaison during the meeting. Each speaker is asked to limit their comments to five minutes.

4. COMMISSIONER REPORTS

5. UPDATES

A. Concerts in the Park

Update only on the 2025 Concert in the Park series.

B. Fourth of July

Update only on the Fourth of July Event

6. MINUTES

A. Approval of the minutes from Feb. 12 meeting.

7. DISCUSSION ITEMS ONLY - NO ACTION TAKEN

A. Selna Mongini S.T.E.A.M. Park Project Status

Discussion only regarding the Selna Mongini S.T.E.A.M. Park project status.

B. Selna Mongini S.T.E.A.M. Park Capital Campaign

Discussion only on the Selna Mongini S.T.E.A.M. Park Capital Campaign.

C. Selna Mongini S.T.E.A.M. Park Grand Opening

Discussion only regarding the Selna Mongini S.T.E.A.M. Park Grand Opening event.

8. ACTION ITEMS

A. 2025 Halloween Event

Discuss, consider, and act upon plans for the annual Halloween Safe Trick or Treating event.

B. Selna Mongini S.T.E.A.M. Park Workout Station

Discuss, consider, and act upon the location of the proposed Selna Mongini S.T.E.A.M. Park workout station.

9. FUTURE AGENDA ITEMS

Parks and Recreation Commission may propose items to be placed on a future agenda. This item is for discussion only.

10. ADJOURNMENT-Following adjournment, the Commission will be taking a tour of the Selna Mongini S.T.E.A.M. Park. No official business will be conducted during the tour.

Values

Values are the guiding principles that provide an organization with purpose and direction. The Town of Clarkdale's organizational values are:

COPPER
Customer focused

Open, transparent and equitable
Preserving our history, charm, and environment
Planning for a sustainable future
Economic and social resiliency
Resourceful and innovative

Mission

The Town of Clarkdale serves the community by providing amenities, infrastructure, services, and public safety to enhance quality of life. We are stewards of our history while we sustainably and resiliently plan for the future with an emphasis on community engagement and transparency.

Persons with a disability may request reasonable accommodations by contacting the Town Hall at (928) 639-2400 (TTY: 1-800-367-8939) at least 72 hours in advance of the meeting.



Staff Report

Item Number: 5.A.

Agenda Item: **Concerts in the Park**
Update only on the 2025 Concert in the Park series.

Staff Contact: Joni Westcott, Parks and Recreation Director

Meeting Date: July 23, 2025

Strategic Goal: This agenda item supports the following Clarkdale Strategic Goal Area:

- Goal Area 1 - Enhance the quality of life for residents, businesses, and visitors to Clarkdale.
- Goal Area 2 - Enhance the quality and availability of parks, recreation and cultural opportunities.

Background: Concerts in the Park are going well with an average of 970 attendees per concert and a high attendance of just over 1,200. Great public feedback has been given on all the bands that have performed. The 50/50 raffle has paid out a total of \$2,300 to three lucky winners. Total to-date revenue is \$2,943, which includes \$378 in donated monies. The vendor slots are full with 13 food, information, and goods vendors.

Budget Impact: No impact.

Recommendation: No recommendation. Update only.



Staff Report

Item Number: 5.B.

Agenda Item: **Fourth of July**
Update only on the Fourth of July Event

Staff Contact: Joni Westcott, Parks and Recreation Director

Meeting Date: July 23, 2025

Strategic Goal:

Background: The Fourth of July event was a big hit this year with fewer than usual attendees at approximately 600 and there were only 33 entries in the parade. Entries included individuals or groups who competed for prizes that were handed out by the Mayor. Doug Von Gausig served as the event MC and did a great job. Many compliments were received about the celebration being able to take place back in the gazebo. The Police Department served 500 breakfast meals, but ran out of pancakes. Forty volunteers assisted with set up and take down to help it all come together. We thank our sponsor, Salt River Materials Group, for their generous donation and to Verve Events and Tents, who helped us bring more shade to the children's games area.

A few suggestions came from the volunteers that included:

- Rolling chair and table racks to the park rather than loading on the trailer to make it easier for volunteers.
- Advertising to get there early before pancakes run out. Be prepared for more pancakes.
- Increasing sound system volume during announcements.
- Consider changing the parade award process and timing. Not a lot of attention given to the award winners and congestion at the gazebo.

Next year will be the 50th year celebration.

Budget Impact:

Recommendation: Update only.



Staff Report

Item Number: 6.A.

-
- Agenda Item:** **Approval of the minutes from Feb. 12 meeting.**
- Staff Contact:** Joni Westcott, Parks and Recreation Director
- Meeting Date:** July 23, 2025
- Strategic Goal:** Not applicable.
- Background:** Review of minutes.
- Budget Impact:** No budget impact.
- Recommendation:** Staff recommends approval of the Feb. 12, 2025 meeting minutes.



**NOTICE OF A REGULAR MEETING OF THE PARKS AND RECREATION COMMISSION
OF THE TOWN OF CLARKDALE
WEDNESDAY, FEBRUARY 12, 2025, AT 5:00 PM**

In Person: Clark Memorial Clubhouse, 19 N. Ninth St., Clarkdale AZ

OR

Join Zoom Meeting

<https://us02web.zoom.us/j/85998911182>

Meeting ID: 859 9891 1182

Unless otherwise stated, the public will have physical access to the meeting place 15 minutes prior to the start of the meeting.

Town of Clarkdale Vision

The Town of Clarkdale connects our unique history, proximity to the Verde River, and small-town charm to a future with a vibrant economy.

We cultivate an environment where residents and businesses can thrive; providing services and jobs for our residents and capitalizing upon tourism.

We sustainably enhance our infrastructure, support the arts and education, and develop recreational opportunities to create a bright future for our entire community.

PURSUANT TO A.R.S. §38-431.02, NOTICE IS HEREBY GIVEN that the Parks and Recreation Commission of the Town of Clarkdale will hold a Regular Meeting on Wednesday, February 12, 2025, at 5:00 PM. Members of the Parks and Recreation Commission will attend either in person, by telephone or via Zoom. A quorum of Town Council members may be present at this meeting; however, they will not deliberate or take any action on items. All members of the public are welcome to attend.

ALL ITEMS ON THIS AGENDA ARE SCHEDULED FOR DISCUSSION AND POSSIBLE ACTION, UNLESS OTHERWISE NOTED.

- 1. CALL TO ORDER** – 5:02 p.m.
- 2. ROLL CALL** - Chairperson Kessel, Vice Chair Kramer, Commissioners Keck, and Jones present in person. Commissioner Aasmundstad present via Zoom.
- 3. PUBLIC COMMENT** – No public comment.
- 4. INTRODUCTIONS**
 - A. Introduction of new Commissioners**

Director Joni Westcott introduced the following new Commissioners:

- Jalexa Villegas - Parks and Recreation Commission Youth Advisor.
- Diane Lenz - Parks and Recreation Commission Advisory Member.

5. UPDATES

A. Local Events

An update was given on upcoming local events.

B. Town Park Gazebo

An update was given on the progress of the Town Park Gazebo construction.

C. Selna Mongini S.T.E.A.M. Park Construction

An update was given on the Selna Mongini S.T.E.A.M. Park construction.

D. Tuzigoot River Access Point Updates

Update was given on changes taking place at Tuzigoot River Access Point (RAP).

6. MINUTES

A. Approval of Minutes

Discuss, consider, and act upon the draft minutes from the Regular Meeting held on Dec. 11, 2024.

Action: Approval of minutes.

Motion: Vice Chairperson Kramer

Second: Commissioner Keck

Vote: Approved 5-0

Voting Member	Aye/Nay
Chairperson Cheryl Kessel	Aye
Vice Chairperson Ben Kramer	Aye
Commissioner Robyn Aasmundstad	Aye
Commissioner Becky Keck	Aye
Commissioner John Jones	Aye

7. DISCUSSION ITEMS ONLY - NO ACTION TAKEN

A. Selna Mongini Park S.T.E.A.M. Elements and Signage

Discussion was had regarding Arizona State University (ASU) educational signage and other S.T.E.A.M. items planned at the park.

B. Bike Month

Discussion was had regarding Bike Month activities.

8. NEW BUSINESS

A. Chairperson Selection

Discuss, consider, and act upon the selection of a new Chairperson.

Action: Selection and approval of Cheryl Kessel as Chairperson.

Motion: *Vice Chairperson Kramer*

Second: *Commissioner Jones*

Vote: Approved 5-0

Voting Member	Aye/Nay
Chairperson Cheryl Kessel	Aye
Vice Chairperson Ben Kramer	Aye
Commissioner Robyn Aasmundstad	Aye
Commissioner Becky Keck	Aye
Commissioner John Jones	Aye

B. Vice Chairperson Selection

Discuss, consider, and act upon the selection of a new Vice Chairperson.

Action: Selection and approval of Ben Kramer as Vice Chairperson.

Motion: *Commissioner Jones*

Second: *Commissioner Keck*

Vote: Approved 5-0

Voting Member	Aye/Nay
Chairperson Cheryl Kessel	Aye
Vice Chairperson Ben Kramer	Aye
Commissioner Robyn Aasmundstad	Aye
Commissioner Becky Keck	Aye
Commissioner John Jones	Aye

C. Commissioner Reports

Discuss, consider and act upon the addition of a Commissioner Reports section to be included on the Parks and Recreation monthly agenda.

Action: Approval to add a Commissioner Reports section to the monthly agendas.

Motion: Vice Chairperson Kramer

Second: Commissioner Jones

Vote: Approved 5-0

Voting Member	Aye/Nay
Chairperson Cheryl Kessel	Aye
Vice Chairperson Ben Kramer	Aye
Commissioner Robyn Aasmundstad	Aye
Commissioner Becky Keck	Aye
Commissioner John Jones	Aye

9. FUTURE AGENDA ITEMS

Director Westcott proposed the memorial dedication policy be placed on a future agenda for discussion.

10. ADJOURNMENT - Chairperson Kessel adjourned the meeting without objection at 6:45 p.m.

Values

Values are the guiding principles that provide an organization with purpose and direction. The Town of Clarkdale's organizational values are:

COPPER

Customer focused

Open, transparent and equitable

Preserving our history, charm, and environment

Planning for a sustainable future

Economic and social resiliency

Resourceful and innovative

Mission

The Town of Clarkdale serves the community by providing amenities, infrastructure, services, and public safety to enhance quality of life. We are stewards of our history while we sustainably and resiliently plan for the future with an emphasis on community engagement and transparency.

Persons with a disability may request reasonable accommodations by contacting the Town Hall at (928) 639-2400 (TTY: 1-800-367-8939) at least 72 hours in advance of the meeting.



Staff Report

Item Number: 7.A.

Agenda Item: **Selna Mongini S.T.E.A.M. Park Project Status**
Discussion only regarding the Selna Mongini S.T.E.A.M. Park project status.

Staff Contact: Joni Westcott, Parks and Recreation Director

Meeting Date: July 23, 2025

Strategic Goal: This agenda item supports the following Clarkdale Strategic Goal Area:

- Goal Area 1 - Enhance the quality of life for residents, businesses, and visitors to Clarkdale.
- Goal Area 2 - Enhance the quality and availability of parks, recreation and cultural opportunities.

Background: Current status of Selna Mongini S.T.E.A.M. Park construction project:

Despite some issues that occurred during the early stages of construction with the basketball court and the playground grading, the project is coming along nicely. Both problems were resolved, and the project moved forward. We are in the final month of the project.

Park items completed:

- Sitting wall installed.
- Playground equipment installed, including track ride and shade.
- Lighting and electricity installed.
- Basketball backstops and hoops.
- Large pavilion concrete and structure.
- Home plate shade structure pavers and structure.
- Sidewalks.
- Restrooms are complete except for the toilets.
- Art wall installed.
- Concrete picnic tables and benches are in place.
- Tree planting in progress.
- Gray water system installed.

Still needed:

- Welcome sign and S.T.E.A.M. elements signage installed.
- Basketball court primed and painted.
- Rain tank and rain gutter installation.
- Plants and bushes.
- Wi-Fi installation.
- Cornhole board installation.
- Ground cover-DG, Table Mesa rock, and rip rack (in progress).
- Great lawn (in progress).
- Certified playground inspection.
- Playgrounds-wood fiber surfacing.
- Solar table installation.
- Pollinator gardens (late summer/early fall).
- .Additional planting.
- Ball field plaque.
- Snake bike rack installed and painted.
- Wildflower seed sprayed.
- Placement of boulders and geological specimens.
- Parking striping.
- Swings shade structure installed.
- Dugouts - paint, roof replacement.
- Split-rail fencing installed.
- Trash and dog waste stations installed.

Additional funding:

- An additional \$500,000 received from LWCF funding.
- Capital Campaign donations \$285,500.

The current updated park plans are attached.

Budget Impact: Not applicable.

Recommendation: Discussion only.

NOTES TO CONTRACTOR:

1. THE ENGINEER HAS USED HIS BEST JUDGMENT IN THE ESTIMATION OF THE VARYING FIELD CONDITIONS AND CONSTRUCTION METHODS INVOLVED IN THE SITE GRADING. CONSEQUENTLY, ACTUAL QUANTITIES, COST AND TIME REQUIRED FOR THIS PROJECT MAY BE AFFECTED BY MANY FACTORS BEYOND THE ENGINEER'S CONTROL, AND ENGINEER SHALL NOT BE HELD LIABLE FOR ANY DEVIATION FROM HIS ESTIMATED QUANTITIES. IT IS THE RESPONSIBILITY OF THE CONTRACTOR TO VERIFY THE EARTHWORK QUANTITIES BASED ON THE SOIL REPORT. THE FOLLOWING EARTHWORK QUANTITIES FOR THIS PROJECT ARE FROM FINISH GRADE TO EXISTING GRADE. (NO SUB-GRADE OR SHRINKAGE VALUES ARE TAKEN INTO CONSIDERATION IN THESE QUANTITIES).

EARTHWORK

- 1 EXCAVATION (CUT) 580 CY
- 2 EMBANKMENT (FILL) 196 CY
- 3 EXPORT 384 CY

SITE CONSTRUCTION KEYNOTES

- 1 CLEAR AND GRUB PER M.A.G. SPEC 201
- 2 VERTICAL CURB & GUTTER PER M.A.G. DTL 220 TYPE 'A'
- 3 3" ASPHALT OVER 6" ABC PER DETAIL 3 ON DWG C2
- 4 CONCRETE SIDEWALK PER DETAIL 1 ON DWG C2
- 6 CONSTRUCT POST-TENSION BASKETBALL COURT PER DWG C5 AND STRUCTURAL PLANS
- 7 DECOMPOSED GRANITE WALKWAY PER LANDSCAPE PLANS AND DETAIL 2 ON DWG C2
- 8 3' HIGH QUARRIED LIMESTONE RETAINING WALL PER TOWN SPECIFICATIONS

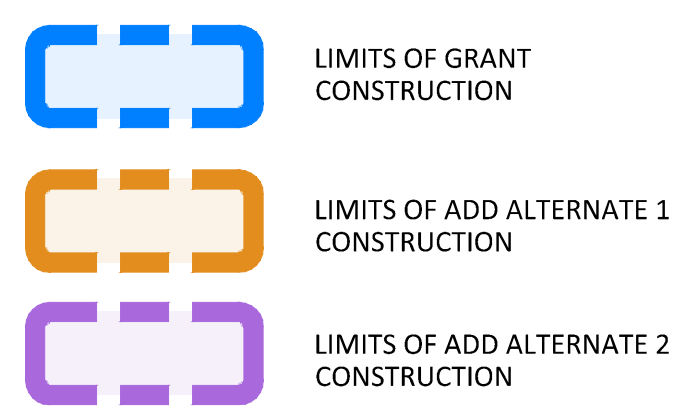
UTILITY KEYNOTES

- 9 QUARRIED LIMESTONE RETAINING WALL (HEIGHT VARIES) PER TOWN SPECIFICATIONS
- 10 CONSTRUCT DETENTION BASIN MIN 12" DEEP
- 11 DG PAD FOR PORTABLE TOILETS PER PLAN AND DETAIL 2 ON DWG C2
- 12 SIDEWALK RAMP PER DETAIL 4 ON DWG C2
- 13 PAVERS PER LANDSCAPE PLANS
- 14 CONCRETE STAIRS PER DETAILS ON DWG C2
- 15 APPLY COURT SURFACING PER DWG C5
- 17 INSTALL BASKETBALL HOOPS PER MANUFACTURERES SPECIFICATIONS
- 19 CONSTRUCT RESTROOM BUILDING PER STRUCTURAL DWGS
- 20 CONSTRUCT PAVILION PER DWG C7 OR EQUIVALENT
- 21 CONSTRUCT SHADE STRUCTURE PER DWG C7 OR EQUIVALENT

UTILITY KEYNOTES

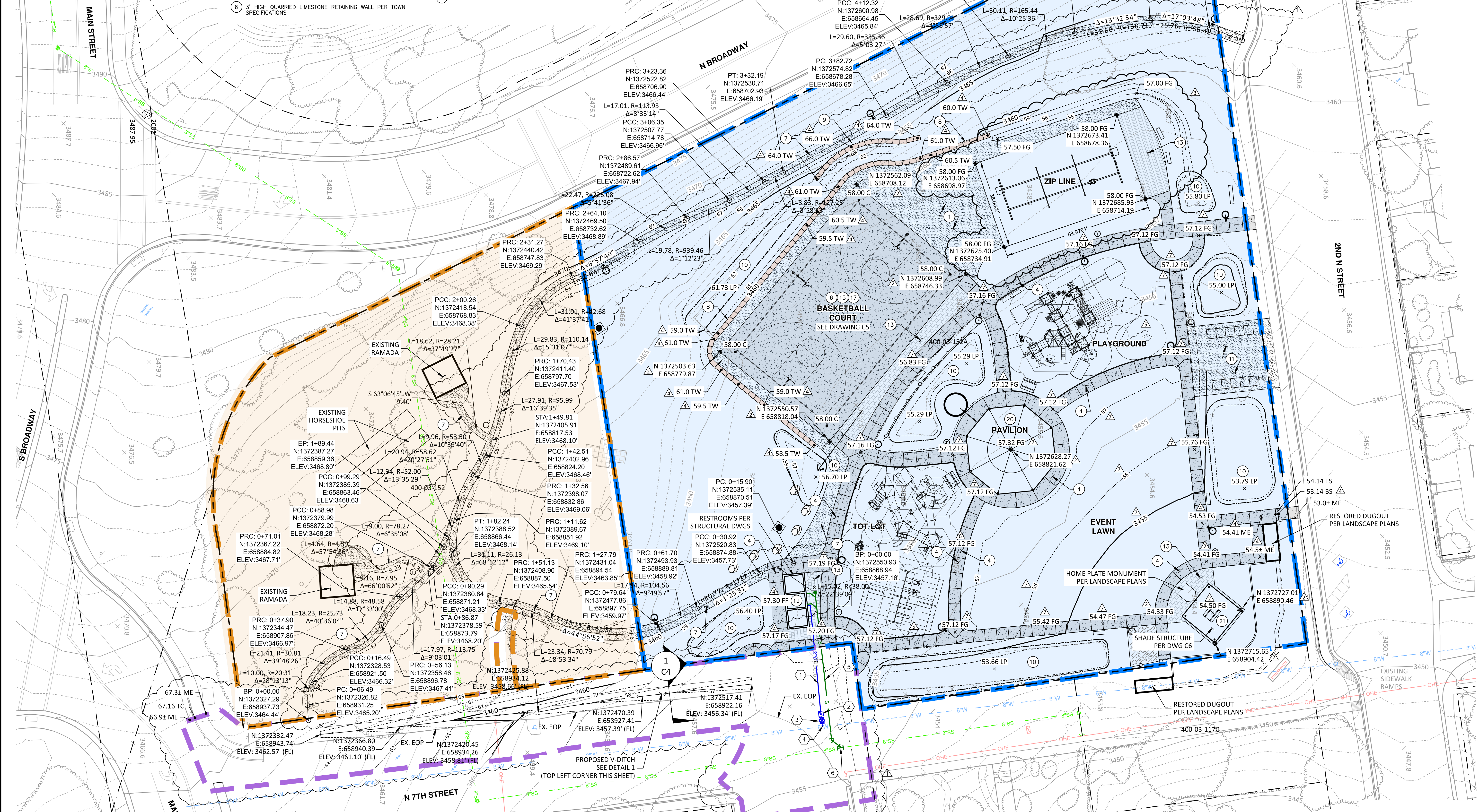
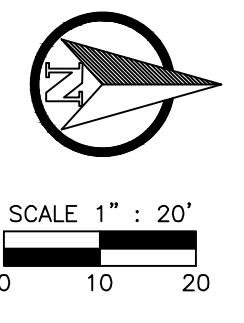
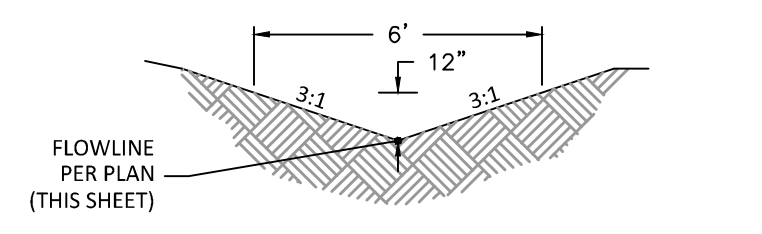
- 1 INSTALL 1" WATER LINE FROM MAIN PER TOWN OF CLARKDALE AND M.A.G. 610 SPEC SECTIONS
- 2 INSTALL WATER METER PER TOWN OF CLARKDALE AND M.A.G. SPEC SECTION 610
- 3 INSTALL WATER VALVE PER TOWN OF CLARKDALE AND M.A.G. SPEC SECTION 610
- 4 INSTALL TAPPING SLEEVE PER TOWN OF CLARKDALE AND M.A.G. SPEC SECTION 610
- 5 INSTALL 6" SEWER FROM RESTROOM TO MAIN PER TOWN OF CLARKDALE AND M.A.G. SPEC SECTION 615
- 6 INSTALL SEWER CONNECTION PER M.A.G. DETAIL 440-1 AND SPEC SECTION 615

CONSTRUCTION LIMITS



V-DITCH DETAIL

NOT TO SCALE



NO.	DATE	BY	REVISION
1	11/08/24		AS ISSUED FOR PERMIT TO THE OS WALKWAY. ALL ALTERNATE CONSTRUCTION MEASUREMENTS HAVE BEEN ADDED TO PROVIDE A ROADSIDE V-DITCH INTERCEPTING ADDITIONAL SPOT ELEVATIONS AND COORDINATES
2	12/16/24		ZIP LINE REVISIONS
3	1/23/25		ADDITIONAL SPOT ELEVATIONS
4	1/30/25		ADDITIONAL SPOT ELEVATIONS
5	2/06/25		UPDATED PLAYGROUND EQUIPMENT
6	3/31/25		UPDATED SPOT ELEVATIONS FOR 3K MAIN PLAYGROUNDS

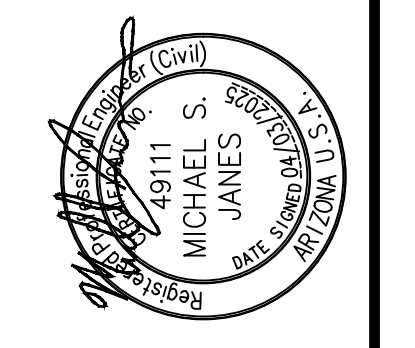
CLARKDALE ENGINEERING
SELNA-MONGINI PARK
SITE PLAN

CLARKDALE, AZ

YAVAPAI COUNTY

ARDURRA
COLLABORATE. INNOVATE. CREATE.

0: 928.282.1061
75 KALLOF PLACE
SEDONA, AZ 86336
www.ardurra.com



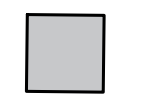

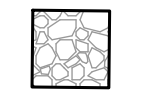

FILE: P:\2023\2023\DRAWINGS\CONSTRUCTION\PLANS\IC-SP-223353.DWG PLOTTED: Apr 03, 2025-2:05pm

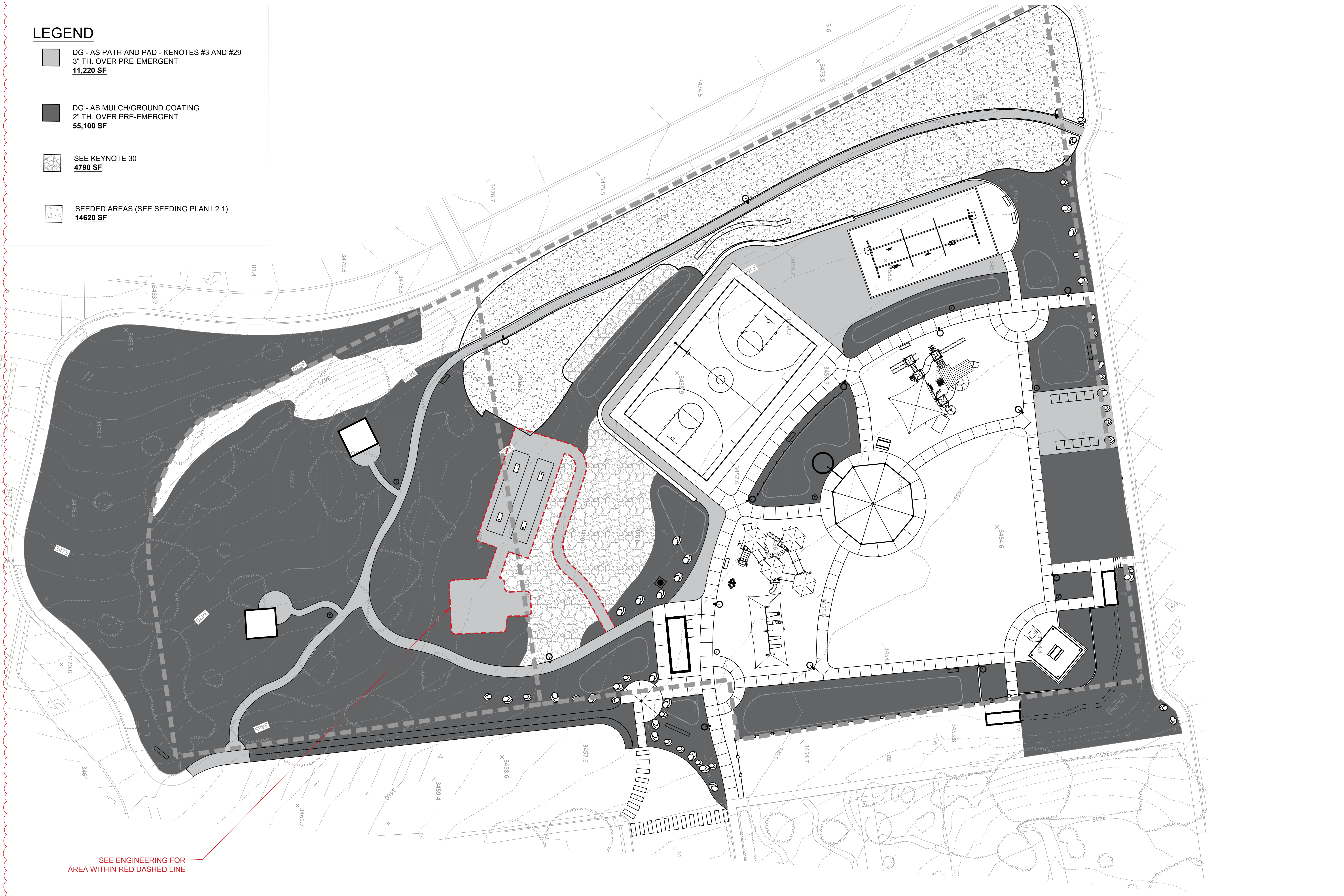
Contact Arizona 811 at least two full working days before you begin excavation

Call 811 or click Arizona811.com

DWG:	C4
SHEET:	4
OF:	14
JOB NO.:	223353
DESIGN BY:	AHB
DRAWN BY:	MMW
CHECKED:	AHB
DATE:	APRIL 2025

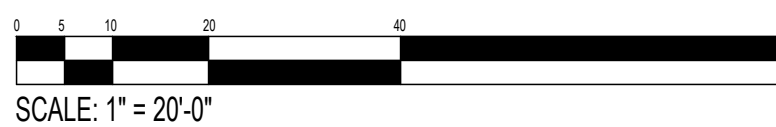
LEGEND

-  DG - AS PATH AND PAD - KENOTES #3 AND #29
3" TH. OVER PRE-EMERGENT
11,220 SF
-  DG - AS MULCH/GROUND COATING
2" TH. OVER PRE-EMERGENT
55,100 SF
-  SEE KEYNOTE 30
4790 SF
-  SEEDED AREAS (SEE SEEDING PLAN L2.1)
14620 SF



SEE ENGINEERING FOR
AREA WITHIN RED DASHED LINE

GROUND COATING SCHEDULE



NEW WEST WORKSHOP
 T. 928.583.4481
 F. 928.899.6489
 www.newwestworkshop.com
 3019 37th St.
 Lubbock, TX 79413

SELNA-MONGINI PARK
 CLARKDALE, ARIZONA

PROJECT:	2307
DATE:	06.06.24
REVISIONS:	
All Sheets	01.13.25
1 Ground Coating Sch.	07.07.25
2 Remove Seeded Area	07.07.25

L1.3

SELNA-MONGINI PARK
 CLARKDALE, ARIZONA

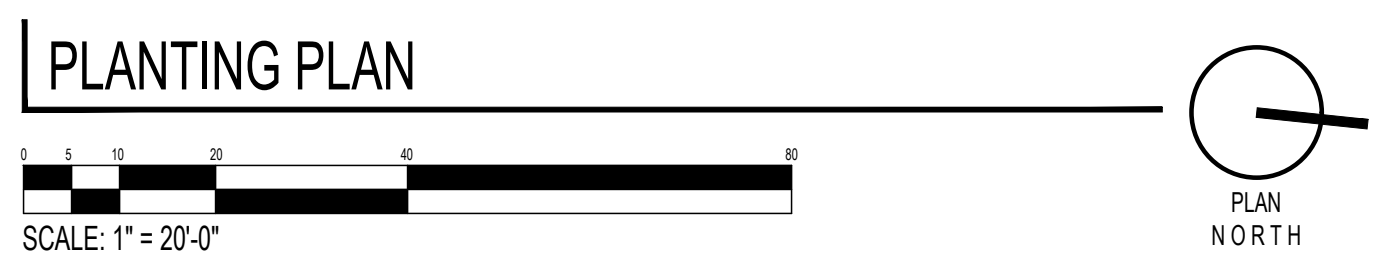


NEW CORNHOLE AND
 WORKOUT AREA FOOTPRINT.
 SEE ENGINEERING.

NOTE:

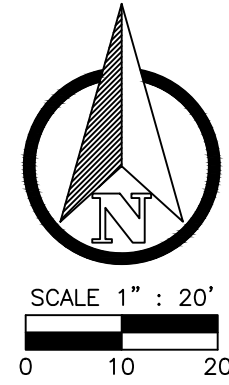
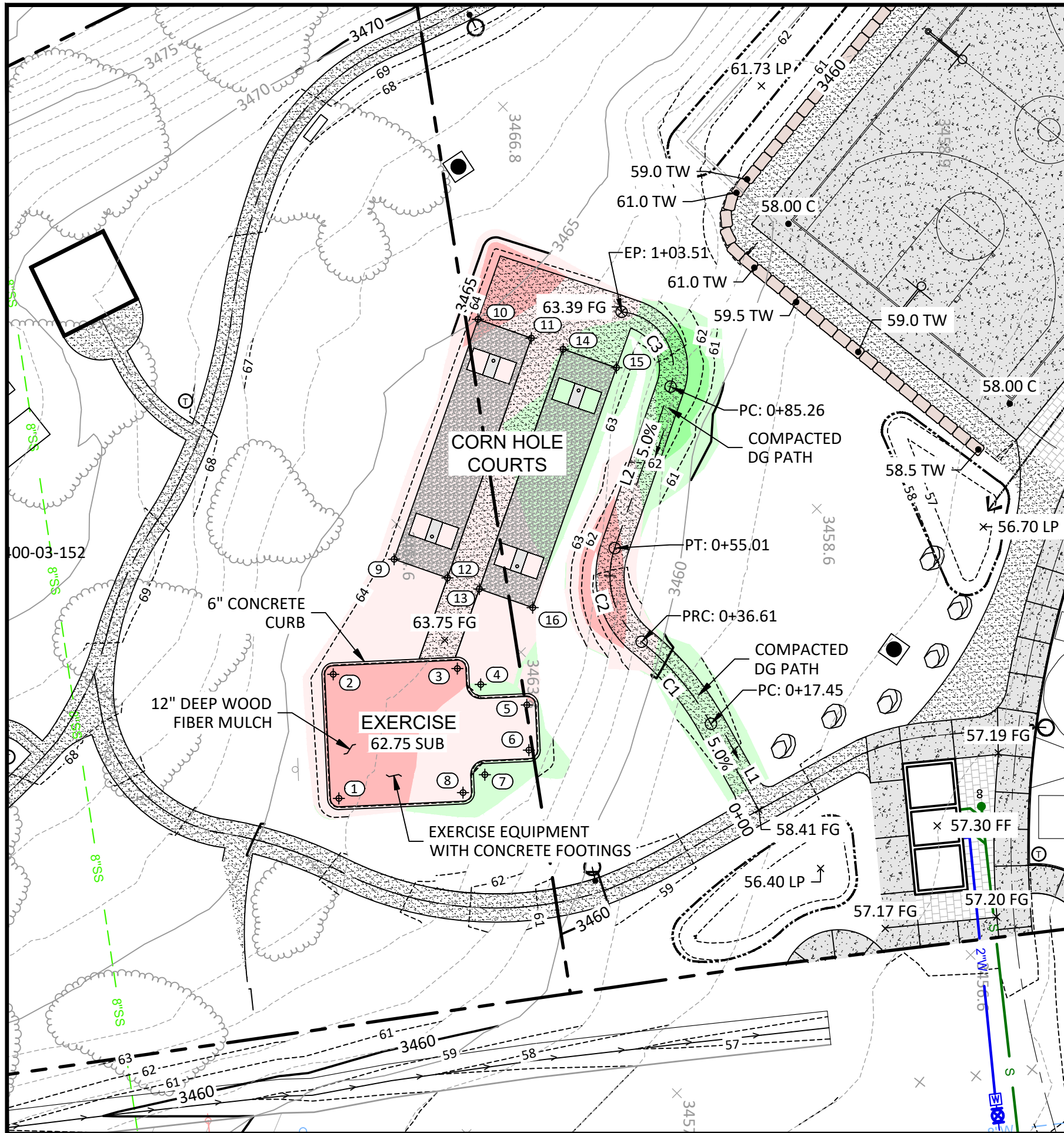
- A. USE PLAN FOR TOTAL PLANT QUANTITY WITHIN THE LIMIT OF GRAN
- B. SEE DTL. L2.2-12 FOR ALL TREES/SHRUBS PLANTED ON SLOPE GREATER THAN 5:1
- C. SEE DTL. L2.2-11 FOR ALL TREES/SHRUBS PLANTED IN RAINWATER STRUCTURE KEYNOTE 27
- D. SEE DTL. L1.2-8 FOR ALL TREES/SHRUBS PLANTED IN RAINWATER STRUCTURE KEYNOTE 22
- E. SEE DTL. L2.2-13 FOR ALL OTHER TREES/SHRUBS
- F. LA TO VERIFY ALL PLANT LOCATIONS PRIOR TO INSTALLATION

PERENNIALS BY OTHERS
 D.G. NO PERENNIALS



PROJECT:	2307
DATE:	06.06.24
REVISIONS:	
All Sheets	01.13.25
Planting locations	06.20.25

L2.0




CUT/FILL Table		
Range	Area	Color
CUT FROM 1' TO 1.95'	740.85	[Red]
CUT FROM 0' TO 1'	2314.08	[Light Red]
FILL FROM 0' TO 1'	1334.69	[Light Green]
FILL FROM 1' TO 2.41'	235.40	[Green]

PATH TO CORN HOLE				
Number	Radius	Length	Line/Chord Direction	A Value
L1		17.45	S60° 54' 31.79"W	
C1	50.00	19.17	S49° 51' 01.87"W	
C2	14.91	18.39	S73° 58' 11.84"W	
L2		30.25	N70° 55' 47.36"W	
C3	10.02	18.25	S56° 49' 41.29"W	

POINT TABLE				
POINT #	NORTHING	EASTING	ELEVATION	DESCRIPTION
1	1372430.60	658881.51	3462.75	CURVE CENTER
2	1372429.60	658859.54	3462.75	CURVE CENTER
3	1372451.57	658858.53	3462.75	CURVE CENTER
4	1372455.71	658861.34	3463.75	CURVE CENTER
5	1372463.88	658864.97	3462.75	CURVE CENTER
6	1372464.25	658872.96	3462.75	CURVE CENTER
7	1372456.44	658877.33	3463.75	CURVE CENTER
8	1372452.58	658880.51	3462.75	CURVE CENTER
9	1372440.38	658839.16	3463.75	CORNER OF COURT
10	1372455.23	658796.66	3463.75	CORNER OF COURT
11	1372464.67	658799.97	3463.75	CORNER OF COURT
12	1372449.82	658842.46	3463.75	CORNER OF COURT
13	1372455.46	658844.43	3463.75	CORNER OF COURT
14	1372470.30	658801.94	3463.75	CORNER OF COURT
15	1372479.74	658805.22	3463.75	CORNER OF COURT
16	1372464.90	658847.73	3463.75	CORNER OF COURT

EARTHWORK
 CUT = 78 C.Y.
 FILL = 24 C.Y.
 EXTRA CUT = 54 C.Y.





ARDURRA
www.ardurra.com

SELNA-MONGINI PARK

CORN HOLE & EXERCISE AREA

CLARKDALE, AZ

DRAWN BY: MWJ

DATE: MAY 2025

SCALE: 1"=20'

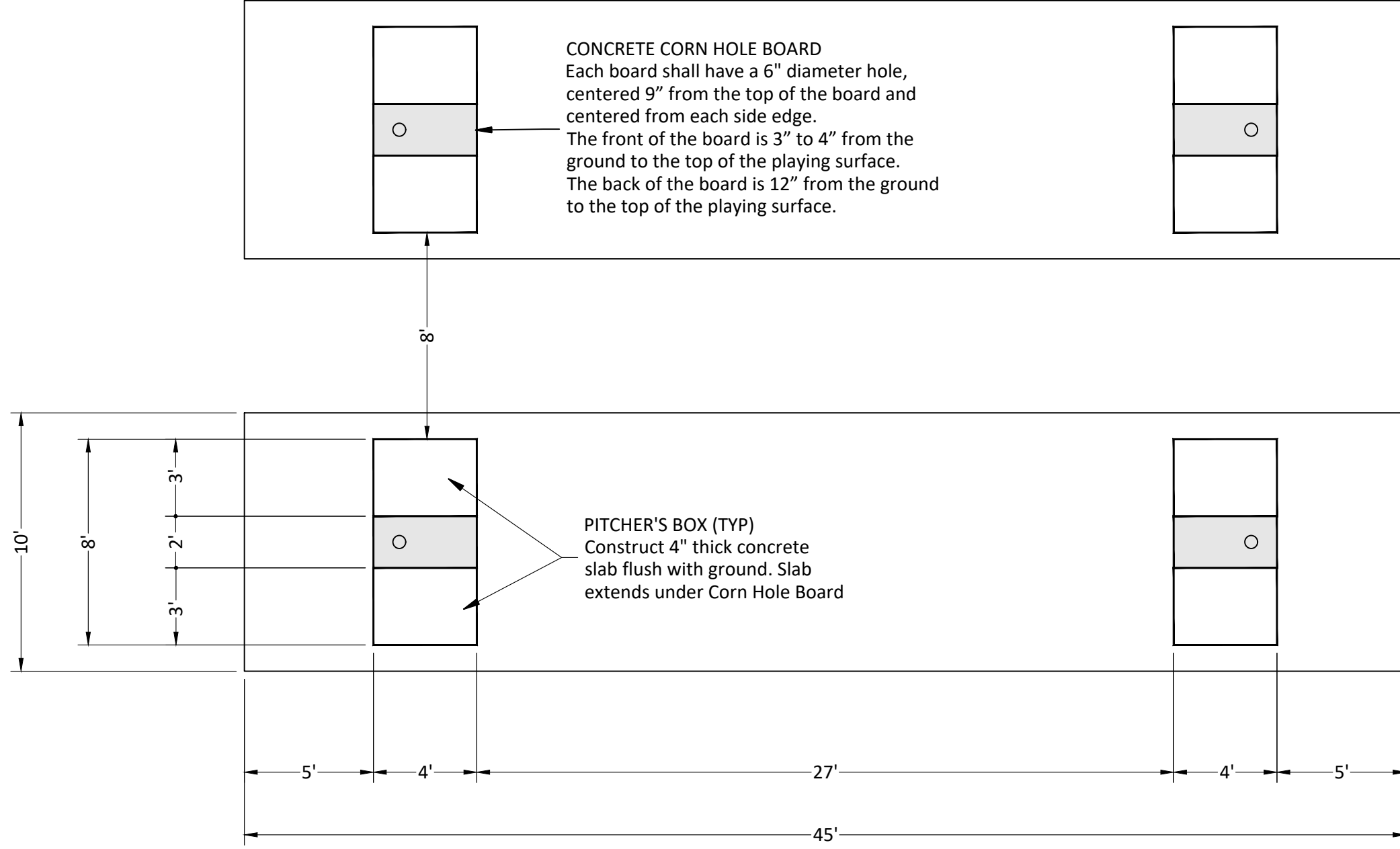
JOB NO: 223353

SHEET

1

OF

3



CORN HOLE COURT LAYOUT PLAN
1"=5'

CONCRETE CORN HOLE BOARD
Each board shall have a 6" diameter hole, centered 9" from the top of the board and centered from each side edge. The front of the board is 3" to 4" from the ground to the top of the playing surface. The back of the board is 12" from the ground to the top of the playing surface.

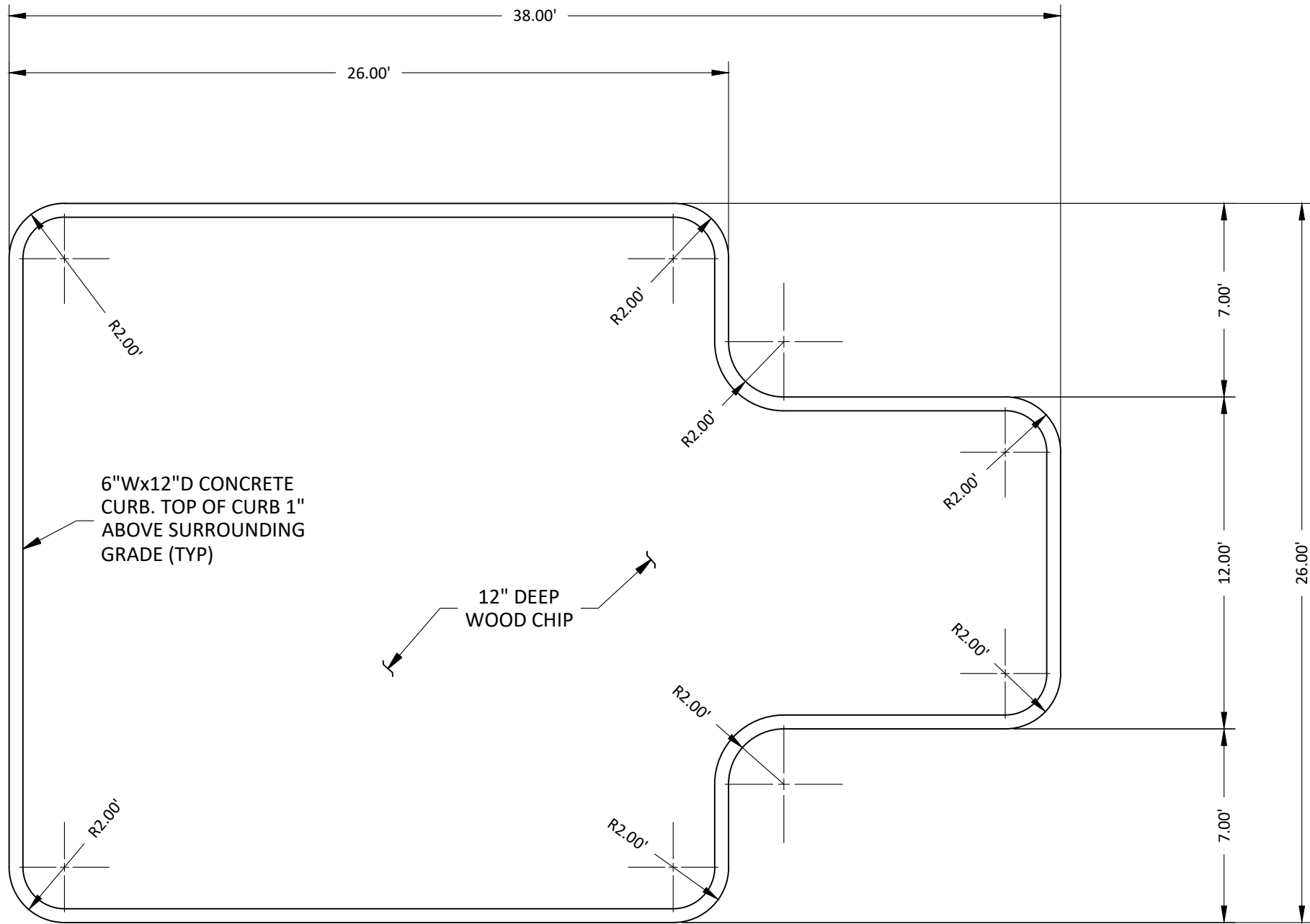
PITCHER'S BOX (TYP)
Construct 4" thick concrete slab flush with ground. Slab extends under Corn Hole Board



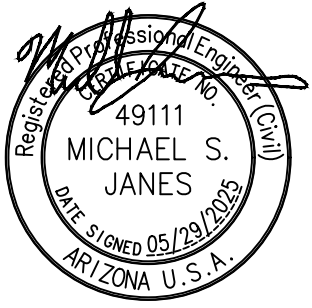
SELNA-MONGINI PARK
CORN HOLE & EXERCISE DETAILS
CLARKDALE, AZ
YAVAPAI COUNTY

DRAWN BY:	MWJ
DATE:	MAY 2025
SCALE:	1"=5'
JOB NO:	223353

SHEET
2
OF
3



EXERCISE AREA LAYOUT PLAN
1"=5'



SELNA-MONGINI PARK
CORN HOLE & EXERCISE DETAILS
 YAVAPAI COUNTY
 CLARKDALE, AZ

SHEET	DRAWN BY:	MWJ
	DATE:	MAY 2025
3	SCALE:	1"=5'
	JOB NO.:	223353
OF	3	



Staff Report

Item Number: 7.B.

Agenda Item: **Selna Mongini S.T.E.A.M. Park Capital Campaign**
Disussion only on the Selna Mongini S.T.E.A.M. Park Capital Campaign.

Staff Contact: Chell Smart, Manager of Parks and Recreation and Communications/PIO

Meeting Date: July 23, 2025

Strategic Goal: This agenda item supports the following Clarkdale Strategic Goal Area:

- Goal Area 1 - Enhance the quality of life for residents, businesses, and visitors to Clarkdale.
- Goal Area 2 - Enhance the quality and availability of parks, recreation and cultural opportunities.

Background: The Town of Clarkdale created a Capital Campaign to supplement funding for the Selna Mongini S.T.E.A.M. Park. Some donations were intended to supplement the overall park project, while others specifically noted S.T.E.A.M. items the donor wanted to fund. **The following items are recommended for inclusion in the park plan and will be funded by donated funds through the Capital Campaign.** Items that have been approved by the Commission in a previously reviewed and approved park plan are noted below as “previously approved” and will be included.

- **\$1,000 - Bird identification hardware and software device.**
- **\$20,000 – Solar charging table.**
- **\$50,000 – Workout Station through Clarkdale Foundation grant funded by APS.**
- **\$5,000 – One cornhole board set (two boards).**
- **\$38,000 – Rain capture system. (Previously approved)**
- **\$2,000 – Butterfly gardens. (Previously approved)**
- **\$5,000 – Gray water recycling system.**
- **\$1,500 – Art wall artist stipends. (Previously approved)**
- **\$1,200 – Lending library.**
- **\$50,000 – Large pavilion. (Previously approved)**
- **\$2,500 – Large trees. (Previously approved)**

Items with partial funding available which will be scaled to fit the available funding amount include:

- **Kid's Only Club in dugout.**
- **S.T.E.A.M. themed game cabinet.**

Due to not receiving capital campaign donations, as well as other staff considerations, the following items are recommended to **not be included** in the park plan.

- \$10,000 - Kinetic energy demonstration bench.
- \$25,000 - Music in the park instrument station.

Budget Impact: The total current cash amount donated to the Selna Mongini STEAM Park Capital Campaign is \$285,500 and will come from the Selna Mongini Capital Campaign Donation line 80-5-2600-8015

Recommendation: Discussion only.

Selma Mongini
S.T.E.A.M. EDUCATIONAL ELEMENTS

DARK SKY LIGHTING



WILDFLOWER HILL



4,000 GAL RAINWATER SYSTEM



ASU SIGNAGE



5 CHESS TABLES



THREE LOCAL ART SCULPTURES



S.T.E.A.M. BOOKS LOANER LIBRARY



SOLAR WIFI TABLE



GRAY WATER DEMO



BIKE REPAIR STATION



POLLINATOR GARDENS



LOCAL ART WALL



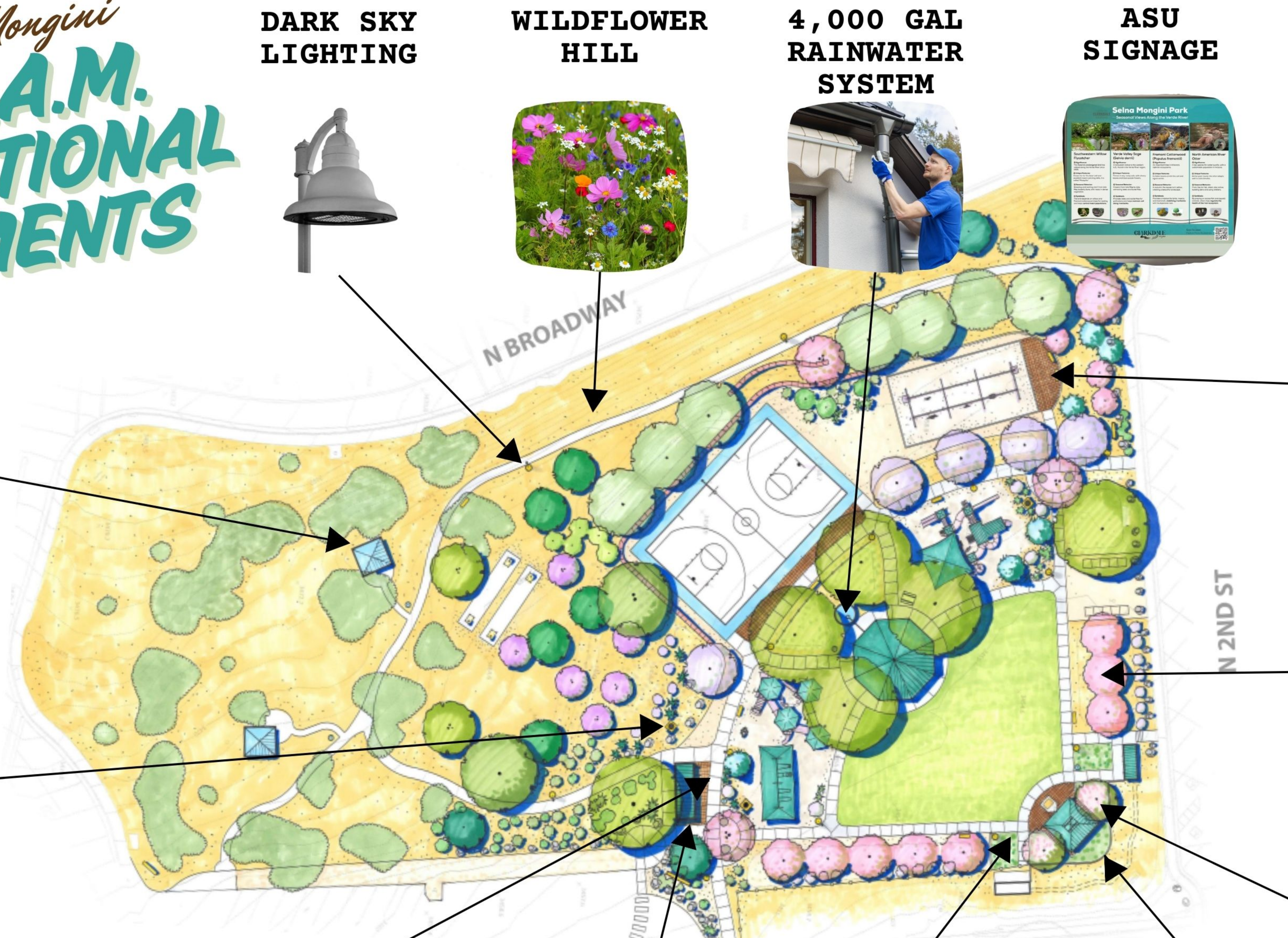
PERMEABLE PAVERS



LOW WATER LANDSCAPE



BIRD ID TECHNOLOGY



KINETIC ENERGY BENCH

The park plans for three types of energy to be demonstrated and on display:

- ✓ High efficiency LED lighting.
- ✓ Solar energy.
- Kinetic energy.

This bench will educate the public about **kinetic (people powered) energy**. When the bench is rocked, custom sounds will play such as native bird songs or information about the park.



STEAM THEMED LENDING LIBRARY

Sponsor the creation of a custom-built lending library (featuring separate areas for youth and adult STEAM-related books). This lending library will allow the learning to come home after visitors leave the park. The design of the fascade will be created by a local artist.



BIRD HABITAT AND KIDS ONLY CLUB

1. Bird-friendly trees and bushes \$1,000
Sponsor a low-water tree or flowering bush to help create a bird-friendly habitat in the park.

2. Kids Only Club! \$10,000
A space just for kids—no parents allowed! Help us transform our historic dugout into a hands-on S.T.E.A.M. learning hub, complete with interactive activities and interchangeable signage with "Kids Only" mysteries to solve in their very own club!



STEAM THEMED GAME CABINET

Sponsor game night in the park for all of Clarkdale! This sponsorship includes a weatherproof outdoor game cabinet safely storing S.T.E.A.M.-themed games, including chess, to complement the many chess tables located throughout the park. Games selected will serve all ages.



SELNA MONGINI STEAM PARK FUNDRAISING CAMPAIGN

Help us build a state of the art STEAM Park in Clarkdale, Arizona. This park will stand as a community gathering place and enduring legacy of sustainability and interactive STEAM education in Clarkdale.

Clarkdale.az.gov/STEAMPark

OUR MISSION

The Town of Clarkdale is excited to create a S.T.E.A.M. (science, technology, engineering, art, mathematics) park in Lower Clarkdale, with \$2M already allocated for the project, including \$1.5M in grant funding.

We invite you to help us bring this vision to life by contributing to the project overall or sponsoring a S.T.E.A.M. element. All sponsors will receive recognition on the park sponsor sign. Additional benefits are available at the \$5,000 level and above.

To contribute, please note your donation item choice and send your check to:

Town of Clarkdale
PO BOX 308, Clarkdale, AZ 86324.



MUSIC IN THE PARK

\$25,000

Every STEAM park needs a shaded musical corner! These percussion instruments create muted tones allowing for quiet exploration of music in the beautiful outdoors. The set includes three musical instruments.

JOIN THE CAUSE

Please join us at the level that works best for you and help bring Clarkdale together in our new park!

Sponsorship levels:

Naming Opportunity - \$50,000.
 One available for the 40,000 Community Pavilion plus all lower level perks.
Sponsored by the Verde Canyon Railroad

Vision Sponsorship - \$5,000.

All lower level perks, plus larger placement on the sponsor wall, with room for an up-to eight word approved message.

Innovator Sponsorship - \$1,000.

All lower level perks, plus recognition during the ribbon cutting, and on press releases for the ribbon cutting.

Hometown Hero - \$100 to \$999.

Sponsors at this level receive name recognition on the sponsor wall, website, and printed marketing as well as a park donor t-shirt.

Just two steps to donate:

1. Donate at clarkdale.az.gov/STEAMPark OR use this QR code to donate funds.

DONATE NOW!



2. Visit clarkdale.az.gov/STEAMPark and fill out the Donor Form. Email it to parks.rec@clarkdale.az.gov.

Want to donate in person? Call Parks at:
Phone: 928-639-2460
Parks.Rec@Clarkdale.az.gov
Clarkdale.az.gov/STEAMPark

SHADED EXERCISE CENTER

\$20,000 to \$149,000

Help us make Clarkdale a healthier home for all. The outdoor equipment selected will fit the final donation budget. The example pictured below costs \$149,000 but individual pieces could also be installed.

Equipment Sponsor \$20,000 + (9 Available)	FitLot Champion \$60,000 + (3 Available)	Title Sponsor \$179,000 + (1 available)
Logo included on welcome sign	Logo featured on welcome sign	Logo on shade canopy and/or park flooring + custom brand colors
Company logo featured on the project website	Company logo featured on the project website	Company logo featured on the project website
10 Community Build Day Volunteer Spots	20 Community Build Day Volunteer Spots	30 Build Day Volunteer Spots
Company table at the Community Build Day	Company table at the Community Build Day	Company table at the ribbon cutting
Ribbon cutting program feature	Participate in Ribbon cutting	Speaking Role at Ribbon cutting + PR partnership



Selna Mongini Park Fundraising Campaign Donation Form

Thank you for supporting the Selna Mongini Park fundraising campaign! Whether you contribute to the project overall, or you choose a specific S.T.E.A.M. item to sponsor, your donation helps bring our community together. Details related to these options are included in the Selna Mongini Park brochure at clarkdale.az.gov/STEAMpark.

Donor Information

Name: _____

Address: _____

City/State/ZIP: _____

Phone: _____

Email: _____

T-shirt size (pick up at ribbon cutting): _____

Donate to the project overall

Please check your sponsorship level:

- Vision Sponsorship- \$5,000.
- Innovator Sponsorship- \$1,000.
- Hometown Hero Sponsorship- \$100 to \$999 .
- I would like to donate this amount _____.

Donate to a specific S.T.E.A.M. element

Please select the item you wish to sponsor:

- Kinetic Energy Bench - \$10,000 (one available).
 - Music in the Park - \$25,000 (one available).
 - Shaded Exercise Station:
 - Equipment sponsor: \$20,000 (nine available).
 - Title sponsor: \$179,000 (one available).
- Note: Final exercise equipment will be determined based on the funds raised. **STEAM-Themed***
- Lending Library - \$1,000 (one available).
 - Bird Watching:
 - Bird Friendly Trees and Bushes: \$1,000 (20 available). Contact Parks and Recreation to discuss type of tree or bush you would like to sponsor. Specific location requests unavailable.
 - Kids Only Club! – Transform the historic dugout into a fun place for kids. \$10,000 (one available).
 - Outdoor game cabinet with STEAM games and chess - \$10,000 (one available).

Total Donation Amount

\$ _____

Payment Method

- Check (make payable to **Town of Clarkdale**). Mail to Town of Clarkdale at PO BOX 308 Clarkdale, AZ 86324.
- Credit Card: Please call 928-639-2460 or visit 39 N. Ninth St. Clarkdale, AZ Admin Office.

Recognition Preferences

- I would like my donation to be anonymous.
- I would like my name recognized as: _____
 - If applicable (donation of \$5,000 or more), and approved by staff, the one-sentence dedication message I would like under my name is:
_____.

Signature: _____

Date: _____

Questions? Call Parks and Recreation at 928-639-2460.

You can make your payment at clarkdale.az.gov/STEAMPARK or make a quick payment by scanning this QR code:



Thank you for your generous support enhancing the educational and recreational amenities at Selna Mongini Park.



Staff Report

Item Number: 7.C.

Agenda Item: **Selna Mongini S.T.E.A.M. Park Grand Opening**
Discussion only regarding the Selna Mongini S.T.E.A.M. Park Grand Opening event.

Staff Contact: Joni Westcott, Parks and Recreation Director

Meeting Date: July 23, 2025

Strategic Goal: This agenda item supports the following Clarkdale Strategic Goal Area:

- Goal Area 1 - Enhance the quality of life for residents, businesses, and visitors to Clarkdale.
- Goal Area 2 - Enhance the quality and availability of parks, recreation and cultural opportunities.

Background: The redevelopment of Selna Mongini Park has been in progress for more than five years. The project has gone through multiple phases, including design development and securing more than \$2 million in grant funding and donations to bring the vision to life. The original goal was clear: to revitalize the park into a space that once again serves as a hub for community activity.

Over the course of planning, the park concept evolved significantly. What began as a straightforward park upgrade expanded into a S.T.E.A.M. focused destination incorporating science, technology, engineering, arts, and math elements throughout the park. These features are designed to engage residents and visitors alike, offering interactive, educational components not typically found in neighborhood parks.

Construction is expected to be completed by the end of August. In celebration, staff is planning a festive and welcoming Grand Opening event that will recognize the many contributors to the project including community partners, contractors, Town staff, and the many financial and planning partners who contributed to the project's success. The event will offer the public a first look at the park's features while honoring the collaborative effort that brought it to life.

Staff would like to invite input from the Parks and Recreation Commission regarding the structure and activities for the Grand Opening event.

Budget Impact: To be determined.

Recommendation: Discussion only.



Staff Report

Item Number: 8.A.

Agenda Item: **2025 Halloween Event**
Discuss, consider, and act upon plans for the annual Halloween Safe Trick or Treating event.

Staff Contact: Chell Smart, Manager of Parks and Recreation and Communications/PIO

Meeting Date: July 23, 2025

Strategic Goal: This agenda item supports the following Clarkdale Strategic Goal Area:

- Goal Area 1 - Enhance the quality of life for residents, businesses, and visitors to Clarkdale.
- Goal Area 2 - Enhance the quality and availability of parks, recreation and cultural opportunities.

Background: Clarkdale’s Safe Trick or Treating event on Halloween has taken place for more than 28 years. The event involves stree to provide a safe area for kids and families to walk and trick-or-treat through upper Clarkdale streets. The streets are closed from 5 p.m. to 7 p.m. Resident packets are hand-delivered a month prior to notify residents that the event is taking place and includes information on road closures, as well as a sign for residents to put up if they wish not to participate and a form to request supplemental candy. In addition, Clarkdale Police Department, Verde Valley Fire District, and local volunteers are enlisted to assist with road closures and traffic control.

TOWN OF CLARKDALE HALLOWEEN TRICK OR TREAT ROUTE



Generally, \$3,500 of candy is purchased from Fry’s, Dollar General and Walmart. \$1,000 of these dollars come from the Town’s General Fund, while the remaining amount comes from donated funds. The candy is then

delivered to residents who complete a supplemental candy request.

A costume contest takes place in Town Park that includes judging and awards (cash prizes totaling \$300) for winners in various categories. The costume contest traditionally begins at 5:30 p.m. During the 2024 event planning the Commission considered the following:

- Consider moving the costume contest to 5 p.m. if the streets are closing at 4:30 p.m.
- Emphasize 'costume parade' rather than best costume.
- Encouraging the group to cheer while the parade participants march around three times.
- Participants could receive a handful of candy on the third lap.
- At the end of the third lap, stop music, ask the kids to line up straight while a judge hands out the awards.
- The awards could all be the same amount because there often is not a big difference between the top winners.
- A larger number of awards could be given out, like six \$10 awards rather than three \$20 awards. Ribbons may be a better award.
- The winners could be asked to stay for a moment and wave and get a photo without being announced.
- Consider starting with the older group because the young children don't always know how the costume contest/parade works.

Some of these items were implemented with success.

The Commission should consider all elements of the Safe Trick or Treating Halloween event with the following in mind:

- **Public safety and traffic control**

- Is the existing street closure plan from 4:30–7 p.m. effective and sufficient?

- **Resident communication and participation**

- Is the resident notification process (packet delivery, opt-out signage, candy request form) effective?
- Are residents receiving adequate support (e.g., candy distribution, information) to participate?
- Are there any complaints or feedback from residents regarding road closures or the event in general?

- **Event flow and timing**

- Does shifting the costume contest to start at 5 p.m. improve attendance and reduce overlap with trick-or-treating?
- Does the parade-style contest better suit younger children and allow for greater inclusion?

- **Costume contest**

- Should the emphasis be put on participation rather than competition?
- Was the "three-lap parade with cheering and candy on the final lap" an engaging and manageable format?
- Should the prize format be adjusted (e.g., ribbons or more, smaller-value awards) to recognize more participants and reduce comparison?

- **Inclusivity**

- Should the costume contest begin with older kids to help younger children understand what to expect?
- Are activities engaging for all age groups attending?

- **Volunteer and partner coordination**

- Is the current number of volunteers sufficient for crowd and traffic management?

- **Overall experience and community value**

- Are there opportunities to improve accessibility, reduce crowding, or enhance the experience?

Budget Impact:

General Fund Halloween Expense \$1,000 (01-5-2602-7800)
Halloween Donation Fund Revenue \$2,500 (80-4-2600-4003)
Halloween Donation Fund Expense \$2,500 (80-5-2600-8003)

Recommendation:

Staff recommends approval of the 2025 Halloween Safe Trick or Treating event.



Staff Report

Item Number: 8.B.

Agenda Item: **Selna Mongini S.T.E.A.M. Park Workout Station**
Discuss, consider, and act upon the location of the proposed Selna Mongini S.T.E.A.M. Park workout station.

Staff Contact: Chell Smart, Manager of Parks and Recreation and Communications/PIO

Meeting Date: July 23, 2025

Strategic Goal: This agenda item supports the following Clarkdale Strategic Goal Area:

- Goal Area 1 - Enhance the quality of life for residents, businesses, and visitors to Clarkdale.
- Goal Area 2 - Enhance the quality and availability of parks, recreation and cultural opportunities.

Background: The Town of Clarkdale included a proposed outdoor workout station in the donation-funded Capital Campaign for Selna Mongini STEAM Park and pursued grant funding through Arizona Public Service (APS) in collaboration with the Clarkdale Foundation. Funding has now been secured through a combination of grant and private donations. APS awarded a \$50,000 grant specifically designated for the workout station, which will be designed to serve community members of all ages and fitness levels. Interpretive stickers will be affixed to each element to demonstrate proper use, and safety signage will also be installed.

The selected equipment is from the BESTRONG brand, and will be purchased through Mojave, a cooperative procurement source. Installation will be completed by AZ Recreation, the same contractor installing the playground at Selna Mongini Park. Installation is tentatively scheduled for **mid-September 2025**. Warranty details are included as an attachment to this report.

Proposed equipment package:

The equipment selected fits within the available budget and has been reviewed for durability, value, and compatibility with the overall aesthetic of the S.T.E.A.M. Park. The following elements will be included:

1. Elliptical trainer
2. Ab and back trainer

3. Suspension trainer
4. Combined pull-up bars
5. Dip and balance bar
6. Straight pull-up bar
7. Low pull-up bar and bush bar
8. Multifunctional pull-up bar
9. Shade structure (20 ft. x 22 ft.)



Engineers reviewed and recommended this location for the workout station including an ADA path:



Budget Impact:

Total project cost: \$78,631.12.
 \$50,000 APS Grant funding #80-5-2600-8015.
 \$28,631.12 Capital Campaign donations #80-5-2600-8015.

Recommendation:

Staff recommend approval of the location of the proposed Selna Mongini S.T.E.A.M. Park workout station.









WARRANTY

The conditions contained in this document apply to the miscellaneous elements of the permanently installed outdoor fitness element of BeStrong, which is manufactured by BeStrong USA, Inc.

This warranty covers design, production and material defects and flaws and is valid provided the products have been handled, transported, stored, installed and maintained in accordance with the manufacturer's specifications and conditions.

The following products are warranted, under normal use and service from the date of invoice as follows:

- 25-year limited warranty on failures of the steel components of the various parts of the elements due to defects in materials or production and structural integrity.
- 15-year limited warranty in case of galvanized steel parts or Electrophoretic deposition (EPD.)
- 10-year limited warranty on failure of the plastic HDPE elements due to defects in material or manufacturing and 5-year warranty for all other plastic components.
- 3-year limited warranty on failure of all rubber-based components and 1-year for rubber stoppers on moving elements.
- 2-year limited warranty for powder coated paint integrity.
- 2-year limited warranty for bearings of moving elements.
- 1-year limited warranty for indoor upholstery (Synthetic leather).

BeStrong's products have been tested and approved by ÉMI-TÜV SÜD Kft. according to EN16630:2015 and manufactured under compliance of ÉMI-TÜV SÜD Kft. according to MSZ EN ISO 9001:2015 standards.

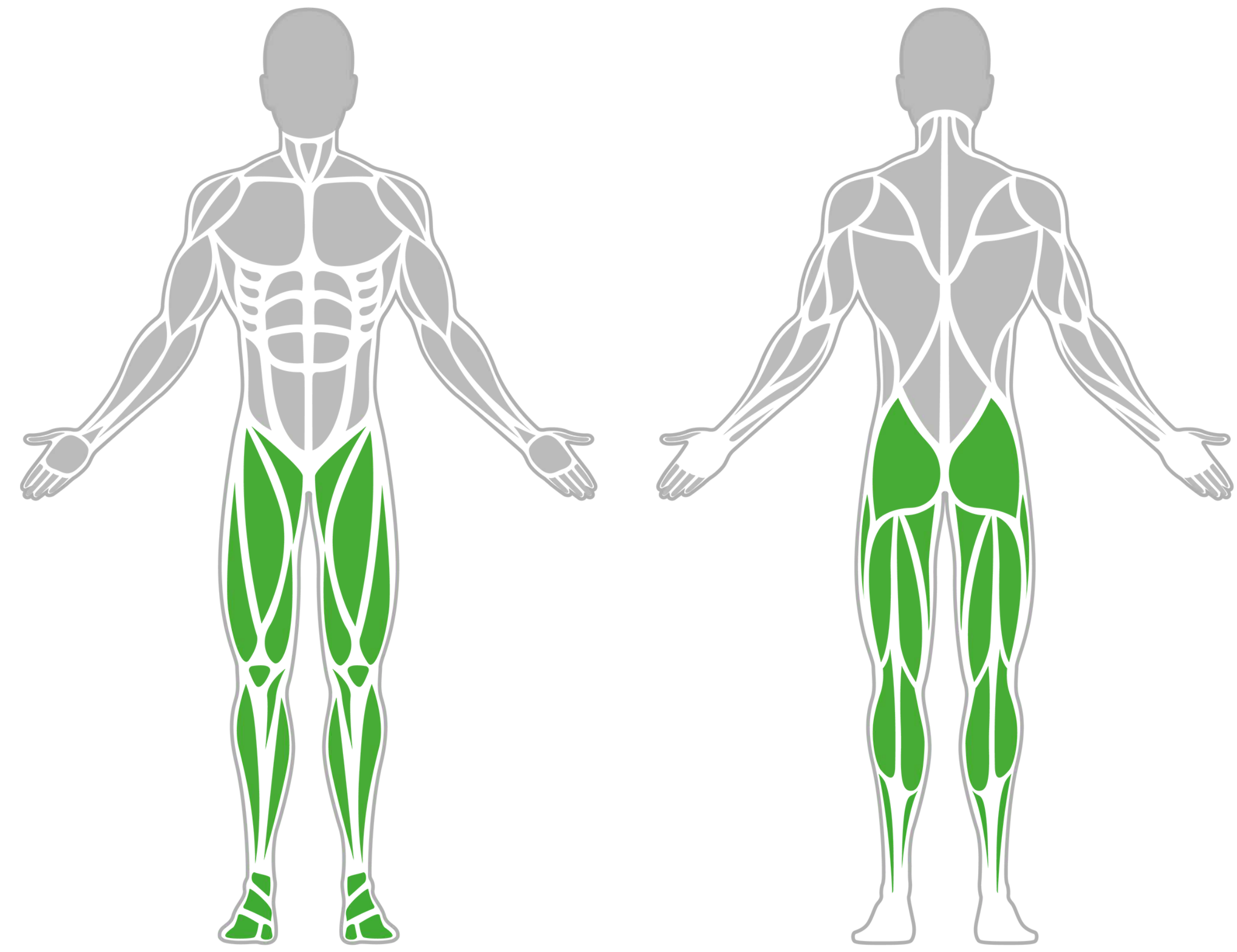


Warranty exclusions:

- Damage caused by vandalism, accidents, negligence, normal wear and tear, aesthetic surface corrosion on metal parts, discoloured surfaces and other cosmetic issues, or failures due to misuse.
- In the event of non-compliance with the conditions set out in the instructions for use and maintenance manuals. If the equipment is not used for the intended purpose, or has undergone improper maintenance or repairs (without special skills and competence), or the installation and of non-compliant elements in the area of the BeStrong fitness park.
- In case of repairs undertaken without prior consultation and consent by BeStrong.
- In the event of damage caused by unforeseen environmental impacts. For example: natural disaster and catastrophes or extreme weather.
- The warranty conditions do not apply to wear and tear due to normal use, minor damage (Ex: surface scratches, dents, scribbles, or graffiti).
- In the event of a deviation from the installation instructions as illustrated in the installation documents provided by the manufacturer.
- For corrosion of non-galvanized equipment directly exposed to chloric or salty water or installed within 10 kilometres of a coastline.
- The customer is obliged to submit their warranty claims within 3 days after the discovery or origin of the defect in the product. The warranty application must be provided officially in writing to info@bestrong.com, accompanied by an attached invoice confirming the purchase.
- In the event of utilizing indoor elements for outdoor purposes.

Valid from: 01.08.2022 until revoked

RECUMBENT BIKE



Function:

The recumbent bike provides a seated and supported cycling experience, offering a comfortable and low-impact cardiovascular workout.

Instruction:

Sit in the seat, so your legs have a slight bend at the knees when pedals are down; find a comfortable position, ensuring your feet reach the pedals easily; secure your feet using the pedal straps. Start pedaling with your desired speed level, then increase intensity due to your fitness level. During exercising, sit back, hold the side handlebars, and pedal slowly to warm up – focus on a smooth motion using your heels and toes for 10-15 minutes before increasing speed for your workout.



WARNING



User guidelines:

This fitness equipment is designed for your enjoyment. For your safety, we ask you to comply with the following:

1. You must be at least 14 years old to use this equipment.
2. Parents/Guardians: Do not let your underage children on this equipment.
3. User assumes all risk and responsibility for using this exercise equipment.
4. Consult a physician prior to starting any physical fitness training program. Potential users with know adverse health conditions should not use this equipment. Before using the equipment check for loose parts, breaks, cracks, or other conditions needing attention.
5. Perform exercises according to instructions on each piece of the equipment.
6. Breathe normally during physical activity.
7. Perform resistance exercises according to instructions in a slow, controlled manner over the full range of motion. Performing the movements too quickly may result in an injury. Use the equipment only with your capabilities.
8. Pay attention to how your body feels. In the event that pain or discomfort occurs, STOP THE EXERCISE IMMEDIATELY and consult your physician.
9. Rest and recovery are important between sets and exercises or sessions.
10. Keep fingers, toes, and hair or other non-participant body parts away from equipment elements during exercise.
11. Keep a safe distance from exercise equipment when in use by others.

BeStrong USA, Inc. shall not be liable for any personal injury to any person resulting from the use of this exercise equipment.

MANUFACTURED BY:

BESTSTRONG



**BESTSTRONG USA, INC.
ORMOND BEACH, FL, 32174
PRODUCTION YEAR: 2023**

MORE INFO



ASTM INTERNATIONAL

DISTRIBUTED BY

**PHONE NUMBER:
E-MAIL:
WEBSITE:**

SELNA-MONGINI PARK
 CLARKDALE, ARIZONA



NEW CORNHOLE AND
 WORKOUT AREA FOOTPRINT
 SEE ENGINEERING.

Cornhole station

Workout Station

- NOTE:
- A. USE PLAN FOR TOTAL PLANT QUANTITY WITHIN THE LIMIT OF GRAN
 - B. SEE DTL. L2.2-12 FOR ALL TREES/SHRUBS PLANTED ON SLOPE GREATER THAN 5:1
 - C. SEE DTL. L2.2-11 FOR ALL TREES/SHRUBS PLANTED IN RAINWATER STRUCTURE KEYNOTE 27
 - D. SEE DTL. L1.2-8 FOR ALL TREES/SHRUBS PLANTED IN RAINWATER STRUCTURE KEYNOTE 22
 - E. SEE DTL. L2.2-13 FOR ALL OTHER TREES/SHRUBS
 - F. LA TO VERIFY ALL PLANT LOCATIONS PRIOR TO INSTALLATION

PROJECT:	2307
DATE:	06.06.24
REVISIONS:	
All Sheets	01.13.25
Planting locations	06.20.25





ARIZONA RECREATION DESIGN, INC.

3802 E La Salle St • Phoenix, AZ 85040
 PO Box 93398 Phoenix, AZ 85070
 (480) 788-3177

Town of Clarkdale
 Phone: 928-821-1277

39 N 9th St.
 Clarkdale, AZ 86324

Job Address:
 701 Second North St.
 Clarkdale, AZ 86324

Print Date: 6-30-2025

Selna Mongini Park Fitness Station: Be Strong & Independent Shade

AZ Rec Representative: Carissa Thomasson **MOHAVE CONTRACT #:** 24K-ARD-0222 **Created On:** 6-20-2025 **Valid For:** 30 Days **Estimated Lead Time:** 10-12 Weeks

MOHAVE CONTRACT ITEMS

Items	Description	Qty/Unit	Unit Price	Price
	Excavation of 12" Depth Dirt including Disposal	840 SF	\$8.50	\$7,140.00
	6" x 12" Formed & Poured Concrete curb (All other Arizona Locations)	125 LF	\$37.00	\$4,625.00
1-3-475SM	Be Strong Fitness Park Option 3 (1-3-475 SM Fitness)	1	\$20,000.00	\$20,000.00
	Mohave Discount (Be Strong = 5%)	1	-\$1,000.00	-\$1,000.00
	Installation of Fitness Equipment (55% of MSRP for Equipment over \$12,000)	1	\$13,200.00	\$13,200.00
	Be Strong Freight	1	\$6,350.00	\$6,350.00
HIP MULTIPANEL 1408	Pyramid Shade, 8' Entry. per drawings	1	\$7,952.00	\$7,952.00
	Mohave Discount (Little Tikes = 12%)	1	-\$954.24	-\$954.24
	Freight	1	\$3,775.00	\$3,775.00
	Installation of Shade Structure (Ramadas & Shelters = 75% of Retail if less than \$12,000)	1	\$5,964.00	\$5,964.00
	Engineering Stamped Drawings Including Calculations (300SF - 599SF)	1 EA	\$1,025.00	\$1,025.00
	Zeager Engineered Wood Fiber	50 CY	\$27.30	\$1,365.00
	1GPA Discount (Zeager = 5%)	1	-\$68.25	-\$68.25
	Installation of EWF (80% of MSRP for less than \$12,000)	1	\$1,092.00	\$1,092.00

Items	Description	Qty/Unit	Unit Price	Price
	Freight for Engineered Wood Fiber	1	\$1,100.00	\$1,100.00
	Mobilization (Yavapai County)	1	\$2,250.00	\$2,250.00
	Lodging (4 Man Crew)	5 Days	\$650.00	\$3,250.00
86324	Clarkdale Sales Tax Rate of 9.85%	15,894.51 USD	\$0.10	\$1,565.61

MOHAVE CONTRACT ITEMS Total:

\$78,631.12

Total Price: \$78,631.12

ARIZONA RECREATION DESIGN, INC. TERMS AND CONDITIONS

INCLUSIONS Proposal price includes only those items specified in the body of the proposal. Providing a signature below or presenting a purchase order to Arizona Recreation Design (ARD), indicates acceptance of the proposal and all terms and conditions.

EXCLUSIONS Unless otherwise stipulated in this proposal, the following items are EXCLUDED:

1. Any items not listed in the body of the proposal.
2. Off-loading, inspection, inventory, assembly, installation or storage of materials.
3. Liftgate service for delivery, unless requested by the customer.
4. Engineered drawings & calculations, special inspection fees, plan review fees, and/or permit fees.
5. Job site security, including temporary fencing, may be required during construction and the associated curing period.
6. Site preparation, including clearing, grading, and/or excavation of the work area.
7. Concrete pads.
8. Curbing and/or sidewalks.
9. Bid bond, payment and performance bonds.
10. Prevailing wage scales and certified payrolls (ie: Davis Bacon, TERO).
11. Private locator service to locate/mark private utility lines within the job site.
12. Any taxes not specifically listed in this proposal.

CLARIFICATIONS

1. This proposal assumes access to power and water on the job site.
2. This proposal assumes truck and skid steer access to the work area.
3. Engineered wood fiber deliveries require tractor trailer access.
4. ARD will contact AZ811 to locate public utilities prior to beginning work on site. AZ811 CANNOT locate private lines, PVC or plastic water lines.
5. Location and marking of private utility and irrigation lines is the responsibility of the owner.
6. ARD accepts no responsibility for damage to private underground utilities, unless locations are clearly marked prior to construction.
7. ARD is not responsible for damage caused during transport. Damage noticed upon delivery should be reported to the driver immediately. All claims for damage must be made within 48 hours of delivery.
8. The proposal is for quantity and scope of work listed only.
9. Estimated shipment times for materials are estimates only. We have no control over shipment dates. ARD makes no guarantee regarding projected shipment dates and shall not be liable for any loss caused by the timing of shipments.
10. Pricing is based on normal soil conditions. Hard dig situations may incur additional charges.
11. The customer is responsible for all landscape repairs such as damaged trees, bushes, lawn, curbing, sidewalks, and/or asphalt paving caused by a materials truck or skid steer needed to complete a project.
12. Overall, security of the property is ultimately the responsibility of the customer. ARD is not responsible for any vandalism or injuries that occur during construction.
13. Play equipment must be installed on an impact-absorbing surface. Surfacing is not included unless specifically listed in this proposal.

PAYMENT

1. Unless specific credit terms are agreed to in advance, half of the total price is due as a deposit at the time of order and the balance is due

upon receipt of the invoice.

2. Sales tax will be charged on all invoices unless tax-exempt documentation is received with order.

3. A 3.5% processing fee will be added to all orders paid by credit card.

4. If the balance due is not paid according to these terms, the purchaser agrees to pay all costs of collection, including reasonable attorney's fees.

I confirm that my action here represents my electronic signature and is binding.

Signature:

Date:

Print Name:
